

**Réunion Internationale des Laboratoires
et Experts des Matériaux, systèmes
de construction et ouvrages**

**The International Union of Laboratories
and Experts in Construction Materials,
Systems and Structures**

Table of Contents

- **RILEM History & Goals**
- **RILEM Organisation**
 - Membership
 - Presidents
 - Organizational Chart
- **Events: Annual weeks and Spring meetings**
- **Educational Activities**
- **Technical committees (TCs)**
- **Publications**
 - Recommendations
 - Reports
 - Proceedings
 - Journals
 - Materials and Structures (M&S)
 - RILEM Technical Letters (RTL)
 - Annual & Technical reports
- **Awards and Honors**
- **RILEM Partnerships**
- **RILEM Corporate members**
- **GLOBE**

The screenshot displays the RILEM website homepage. At the top, there is a navigation bar with the RILEM logo, social media icons, and a search bar. The main header includes the text "International Union of Laboratories and Experts in Construction Materials, Systems and Structures" and a "MEMBERSHIP" button. Below the navigation is a large banner for the "RILEM Cluster F annual meeting" with a "SEE ALL" button. A row of three circular buttons offers "My profile", "Co-Sponsorship", and "Join a TC". The "News" section features three articles: "New Technical Committees" (dated 09 October 2023), "Educational Portal ONLINE (EPON)" (dated 04 October 2023), and "Report of the 77th RILEM Annual Week" (dated 27 September 2023). A "SEE ALL" button is positioned below the news articles. The bottom section highlights "New TCs" with buttons for "APD", "APS", and "MCB". At the very bottom, three circular statistics are shown: "2957 members", "110 corporate members", and "11436 registered users".

RILEM History & Goals

When did everything start?

1947 Paris



RILEM History & Goals

Who were the founders?



Robert L'Hermite (1910-1982)

RILEM Founding Members

S. BECHYNE, *Czechoslovakia*, **J.-L. BIENFAIT**, *The Netherlands*,
F. CAMPUS, *Belgium*, **G. COLONNETTI**, *Italy*,
E. L. Da FONSECA COSTA, *Brazil*, **S. A. DELPECH**, *Argentina*,
E. FORSLIND, *Sweden*, **W. GLANVILLE**, *United Kingdom*,
G. HANSEN, *Denmark*, **R. L'HERMITE**, *France*,
F. LEA, *United Kingdom*, **W. OLSZAK**, *Poland*,
M. ROCHA, *Portugal*, **E. TORROJA**, *Spain*,
M. ROS, *Switzerland*, **M. P. WHITE**, *United States*

**Renew international relations & cooperation
between institutions for testing and research
on materials and structures**

Paris, 17 - 20 June 1947

Laboratoires du Bâtiment et des Travaux Publics de Paris

RILEM History & Goals

RILEM goals

- favour and **promote cooperation at international scale** by general **access** to advanced knowledge,
- stimulate **new directions of research** and its applications, promoting excellence in construction,
- **promote sustainable and safe construction**, and improved performance and cost benefit for society.

RILEM organisation

RILEM Memberships

RILEM is composed of corporate members and individual members, including scientists and engineers, research and testing laboratories and companies.

Corporate Members

- **INSTITUTIONAL AND INSTITUTIONAL-PLUS MEMBERS** are **research and testing organisations** of national renown; universities, international or national standards organisations.
- **INDUSTRIAL MEMBERS** are **large firms or associations** in the materials or construction sectors.
- **ASSOCIATE MEMBERS** are **smaller research, academic or building organisations** or companies.

Individual Members

- **A SENIOR MEMBER** is an experienced scientist or engineer, having reached a position of responsibility and recognised expertise in a public or private organisation or company concerned with testing or research in the field of building materials and structures.
- **A YOUNG MEMBER** is an under-graduated student (including PhD students) or a young research scientist or engineer who is at the early stage of his career **under the age of 35**. Each RILEM young member is linked to the International Network of RILEM, through his registration in the Directory of Members. A RILEM young member may register to contribute to the activity of a RILEM TC.

“... industry companies and firms are very much project and income driven. RILEM is based on voluntary contributions from self-motivated members. This does not bring any profit to a firm but it does bring prestige, credibility and knowledge.”

Dr Fragkoulis Kanavaris, ARUP London, UK, Deputy Chair of RILEM TC 287-CCS: Early age and long-term crack width analysis in RC Structures.

Full interview available [here](#)

RILEM values the input of industry practitioners and professionals. [Become a RILEM member](#) and join a RILEM Technical Committee! Bring Prestige, Credibility and Knowledge to your company!

RILEM organisation

Registered Users

Log in

Stay connected

[Forgot your password?](#)



No account yet?

1 - RILEM membership

Becoming a RILEM member, allows you to access all online RILEM Publications with RILEM membership

[Learn more about membership](#)

2 - Registered user (free account)

Creating your free account gives you access to all online RILEM Publications (non subscribing member) is welcome to be acknowledged as a contributor in a scientific paper or membership which will give them rights

- It is free
- It gives access to the electronic version of the Proceedings published by RILEM Publications
- It gives access to the electronic version of the unedited versions of the RILEM STARS
- It gives access to other publications available on the website, i.e. reports, recommendations and compendiums
- It allows participation to TC meetings, but without the possibility to be listed as a TC member nor as an author on the TC outputs.

RILEM organisation

RILEM Subscribing Members

Log in

Login or email

Password

Stay connected

[Forgot your password?](#)

Log in

or



No account yet?

Registration

1 - RILEM membership

Becoming a RILEM member, allows you to access all online RILEM Publications with RILEM membership

BECOME A MEMBER

[Learn more about membership](#)

2 - Registered user (free account)

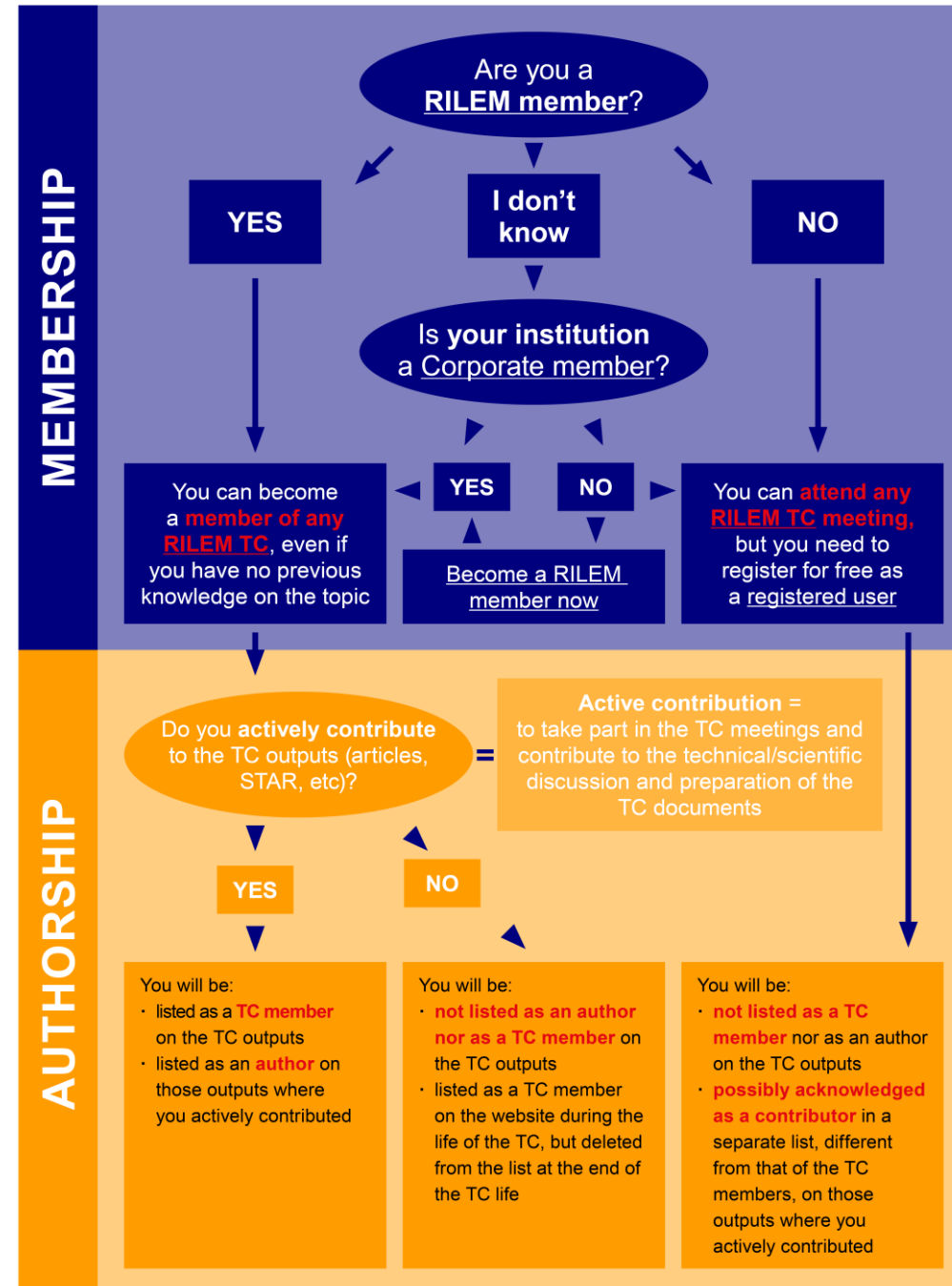
Creating your free account gives you access to all online RILEM Publications (non subscribing member) is welcome to be acknowledged as a contributor in a scientific paper. A free membership which will give them rights

CREATE YOUR FREE ACCOUNT

- Same benefits of registered users
- +
- Membership in a RILEM Technical Committee. A RILEM member who actively contributes to the TC outputs (articles, STARS, etc.) will be listed as a TC member and author on the TC outputs
- Personal access to the documents produced by a RILEM Technical Committee of which you are member
- Access to electronic version of all RILEM Proceedings, published by RILEM Publications and Springer
- Free subscription to the online version of *Materials and Structures* journal (archives, current volumes)
- Reduced fees for RILEM events (in general 10%, subject to decision of local organisers)
- 20% discount on all SPRINGER e-books
- Much more...

RILEM organisation

Some rules about membership and authorship



RILEM organisation

Become a RILEM member!

➤ Individual fees in 2024

- Young Member: 27 euros
- Senior Member: 395 euros
- Retired Member: 80 euros

Young Member is an under-graduated student (including PhD students) or a young research scientist or engineer who is at the early stage of his career under the age of 35

➤ Corporate fees in 2024

- Associate Member: 1340 euros (3 staff members and one associate contact)
- Institutional Member: 2540 euros (15 staff members older than 35 + unlimited staff members under the age of 35)
- Institutional-Plus Member: 4660 euros (unlimited staff members)
- Industrial Member: 4660 euros (unlimited staff members)

A special discount (from 40% to 90%) is applicable for countries according to their GDP per capita. More information at <https://www.rilem.net/membership>

RILEM organisation

RILEM benefits and values for YOUNG MEMBERS

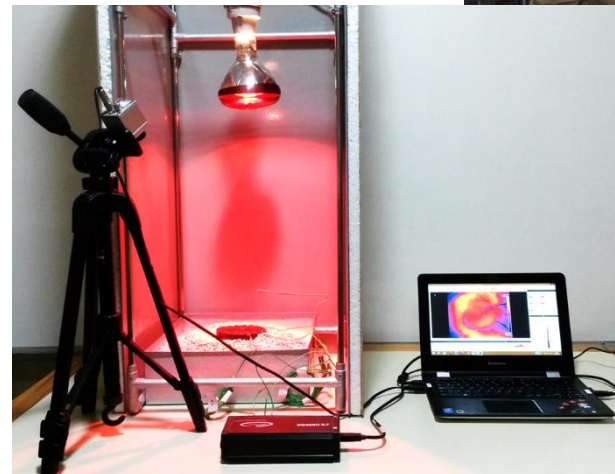
- access to international forum of experts through seminars and workshops
- access to international expertise and opportunities to acquire and advance leading-edge technology through dedicated committee work
- reduced fees on events and printed publications

Worldwide network

Interact with leading scientists and technologists

Many active technical committees

State of the art activities



RILEM organisation

RILEM Youth Council RYC

- RILEM Tasked with attracting, involving and motivating young RILEM members
- Encourage participation in TAC and EAC activities
- Increasing awareness on RILEM events and courses
- Grooming young RILEM members for RILEM leadership positions
- Showcasing / celebrating the achievements of the RILEM Youth
- Creating networks between emerging researchers to increase visibility of / access to RILEM



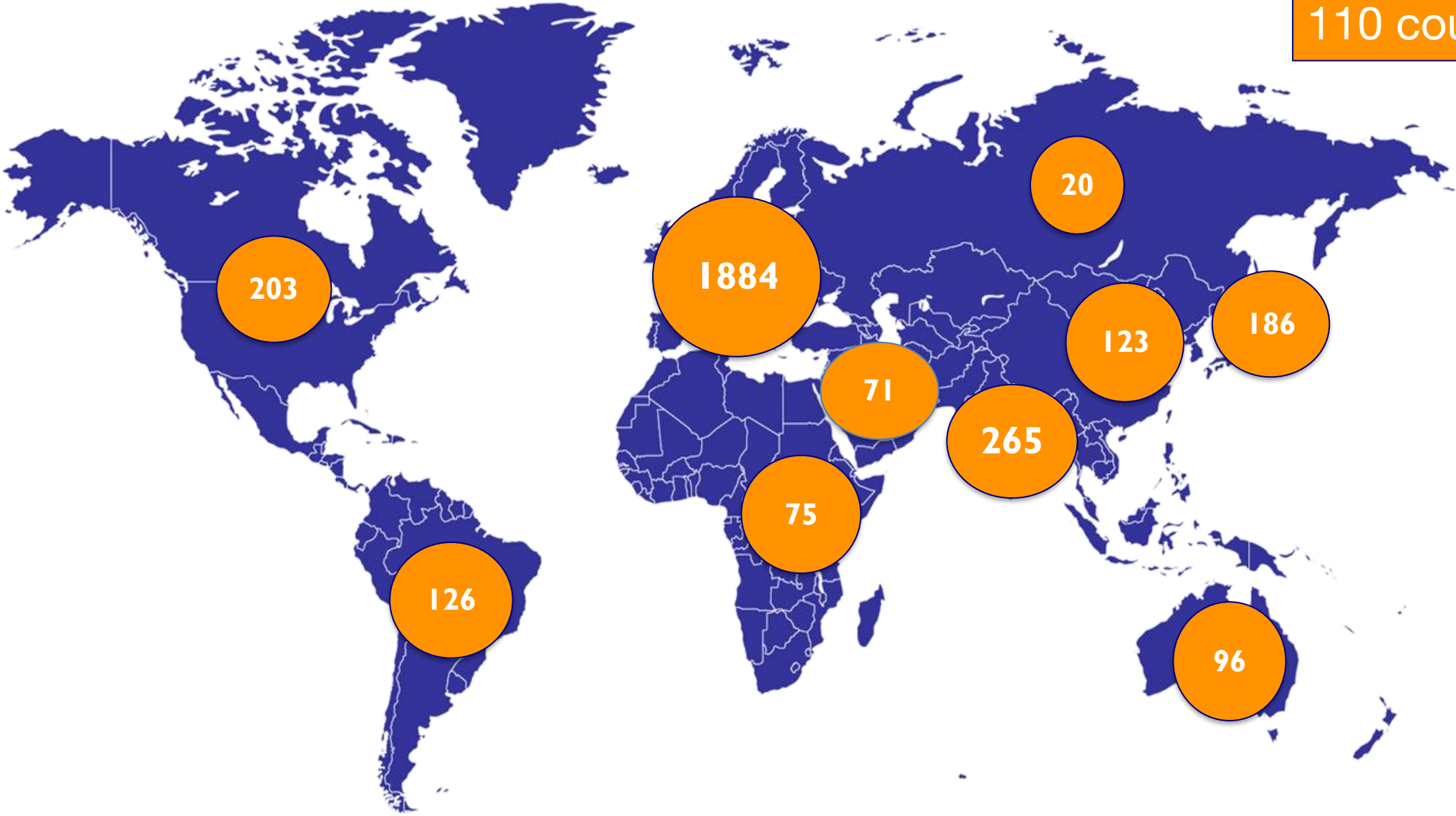
RILEM Worldwide

+3115 members
+118 Corporates
110 countries



RILEM Worldwide

+3115 members
+118 Corporates
110 countries



RILEM organisation

RILEM presidents



President

Dr Nicolas Roussel
Université Gustave Eiffel
FRANCE



Vice-President

Dr Nele De Belie
Gent Univ.
BELGIUM



Past President

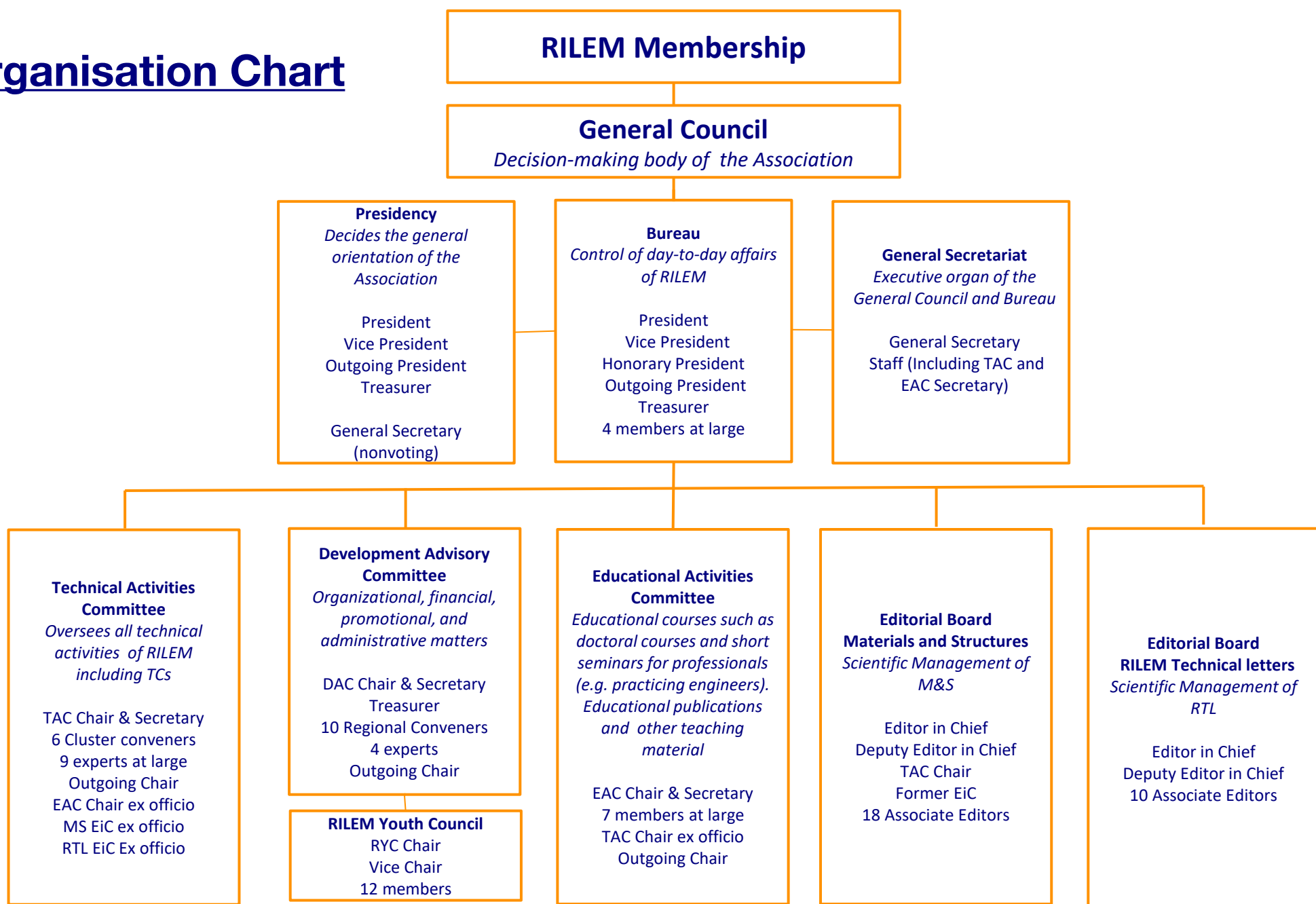
Dr Ravindra Gettu
IIT Madras
INDIA



Honorary President 2024

Prof. Alexandra Bertron
INSA Toulouse / LMDC
FRANCE

RILEM Organisation Chart



RILEM Events

Future RILEM Annual Weeks and Spring Conventions

RILEM Annual Weeks

- April 7th – 12th ,2024 - [78th Annual Week](#), Toulouse, France, Prof. Alexandra Bertron
- 2025 - 79th Annual Week, Hanoi, Vietnam, Prof. Tuan Nguyen Vanand
- 2026 - 80th Annual Week, Nairobi, Kenya, Dr Wolfram Schmidt

RILEM Spring Conventions

- August 25th – 30th, 2024 - [Milano](#), Italy, Dr Liberato Ferrara
- 2025 - Mendrisio, Switzerland, Dr Paglia Christian
- 2026 - Ghent, Belgium, Prof. Nele De Belie



RILEM Educational Activities

EAC

One of the main purposes of the Educational Activities Committee (EAC) of RILEM is to **broaden the education of both PhD students and the professional community through promotion of interesting and informative one-week PhD courses and seminars** on subjects of relevance to researchers working in specific areas. RILEM EAC is responsible for RILEM activities in the field of education. These include a number of different tasks, of which the basic and most important one is the courses to which we grant scientific sponsorship. Though RILEM EAC has only existed for a handful of years, our sponsored courses have been enjoyed by more than 2000 participants and about 200 teachers.

+140

Sponsored doctoral courses since 2010.

207

Participants of doctoral courses benefit from a 3-year free membership in 2022.

11

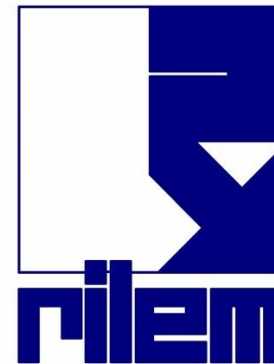
Recurring course series

RILEM EAC Webinars

NEW

- **Monthly free webinar series**, *RILEM Online Conferences & Transfer of Knowledge (ROC&TOK)*, designed to give information about how to communicate and teach subjects, related to the activities of RILEM and its technical committees.
- The webinars take place online on the first Thursday of each month, except for January and August, at 2 PM UTC.
- The webinars target professors and senior PhDs and are delivered by experts. However, they are open to all interested, including students and those working in industry.
- Each webinar is scheduled with a 30-min presentation followed by a 30-min Q&A session.
- The webinars are free, i.e. no registration fees are required.
- **Create your Membership or free Register user account and subscribe to our Newsletter to be kept posted !**

CPD credits issued
by the Institute of
Concrete
Technology, UK



ON ZOOM

On the first Thursday of each month, at 2pm UTC (GMT+0)



ROC&TOK Webinar series

How to communicate and teach subjects related to the activities of RILEM and its technical committees.

RILEM Technical Committees



Technical Committees (TCs) are the **cornerstone** of RILEM

TC work typically results in:

- Technical Exchange
- State-of-the-art reports
- Recommendations on test methods

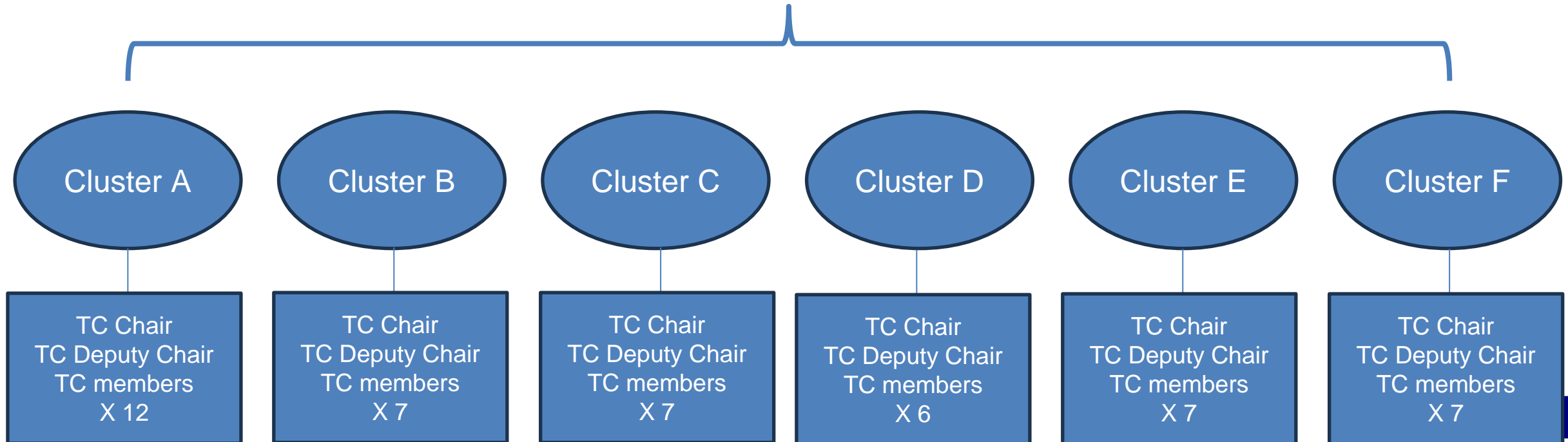
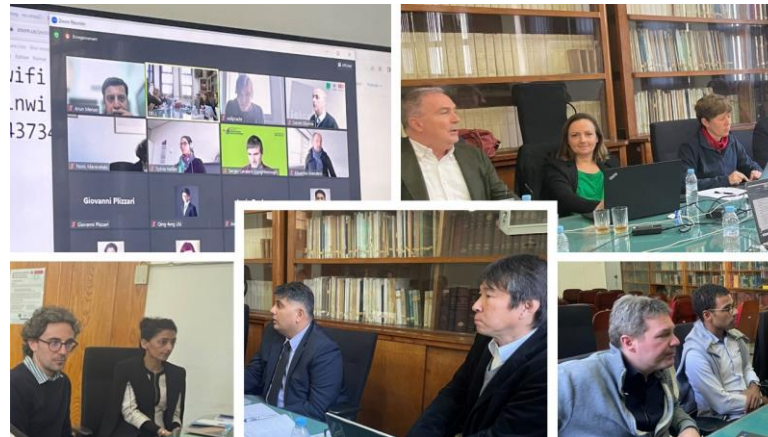
All TCs participants should register by filling the online [“Join a TC registration form”](#) on RILEM Website

The lifetime of a TC is between 5 and 7 years.



Technical Activities Committee

TAC Chair: *Enrico SASSONI*



RILEM Technical Committees

Around 46 TCs are active in 6 Clusters 4 Clusters pertaining to cementitious materials



Material Processing and Characterization

Daman PANESAR, Canada



Transport and Deterioration Mechanisms

Josee DUCHESNE, Canada



Structural Performance and Design

Kei-ichi IMAMOTO, Japan



Service Life and Environmental Impact Assessment

Anya VOLLPRACHT, Germany



Masonry, Timber and Cultural Heritage

Arun MENON, India



Bituminous Materials and Polymers

Eshan DAVE, USA

RILEM Technical Committees

Cluster A: Material Processing and Characterization

- 282-CCL : Calcined Clays as Supplementary Cementitious Materials
- 284-CEC : Controlled expansion of concrete by adding MgO-based expansive agents taking the combined influence of composition and size of concrete elements into consideration
- 291-AMC : Use of Agro-Based Materials as Cementitious Additions in Concrete and Cement-Based Materials
- 296-ECS : Assessment of electrochemical methods to study corrosion of steel in concrete
- 302- CNC : Carbon-based nanomaterials for multifunctional cementitious matrices
- 303-PFC : Performance requirements and testing of fresh printable cement-based materials
- 304-ADC : Assessment of Additively Manufactured Concrete Materials and Structures
- 305-PCC : Pumping of concrete
- 309-MCP : Accelerated Mineral Carbonation for the production of construction materials
- ACP : Active Control of Properties of Fresh and Hardening Cementitious Materials
- MBC : Magnesia-based binders in concrete
- PHC : Performance testing of hydraulic cements

Cluster B: Transport and Deterioration Mechanisms

- [281-CCC : Carbonation of concrete with supplementary cementitious materials](#)
- [283-CAM : Chloride transport in alkali-activated materials](#)
- [285-TMS: Test method for concrete durability under combined role of sulphate and chloride ions](#)
- [286-GDP: Test Methods for Gas Diffusion in Porous Media](#)
- [297-DOC : Degradation of organic coating materials and its relation to concrete durability](#)
- [298-EBD : Methods Test methods to evaluate durability of blended cement pastes against deleterious ions](#)
to evaluate durability of blended cement pastes against deleterious ions
- [MMS : Modelling and experimental validation of moisture state in bulk cementitious materials and at the steel-concrete interface](#)

Cluster C: Structural Performance and Design

- [287-CCS : Early age and long-term crack width analysis in RC Structures](#)
- [288-IEC: Impact and Explosion](#)
- [292-MCC : Mechanical Characterization and Structural design of Textile Reinforced Concrete](#)
- [294-MPA : Mechanical properties of alkali-activated concrete](#)
- [306-CFR : Concrete during Fire - Reassessment of the framework](#)
- [OCM : On-site Corrosion Condition Assessment, Monitoring and Prediction](#)
- [RCC : Rolled compacted concrete for pavement applications](#)

Cluster D: Service Life and Environmental Impact Assessment

- 289-DCM : Long-term durability of structural concretes in marine exposure conditions
- 299-TES : Thermal energy storage in cementitious composites
- 300-ARM : Alkali-aggregate reaction mitigation
- 301-ASR : Risk assessment of concrete mixture designs with alkali-silica reactive (ASR) aggregates
- DCS : Data-driven concrete science
- UMW : Upcycling Powder Mineral “Wastes” into Cement Matrices

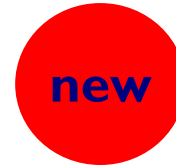
Cluster E: Masonry, Timber and Cultural Heritage

- 277-LHS : Specifications for testing and evaluation of lime-based repair materials for historic Structures
- 290-IMC : Durability of Inorganic Matrix Composites used for Strengthening of Masonry Constructions
- 310-TPT : Tests methods for a reliable characterization of resistance, stiffness and deformation properties of timber joints
- PEM : Processing of earth-based materials
- MAE : Mechanical performance and durability assessment of earthen elements and structures
- BEC : Bio-stabilised earth-based construction: performance-approach for better resilience
- MCB : Mechanical Characterisation of Bamboo

new

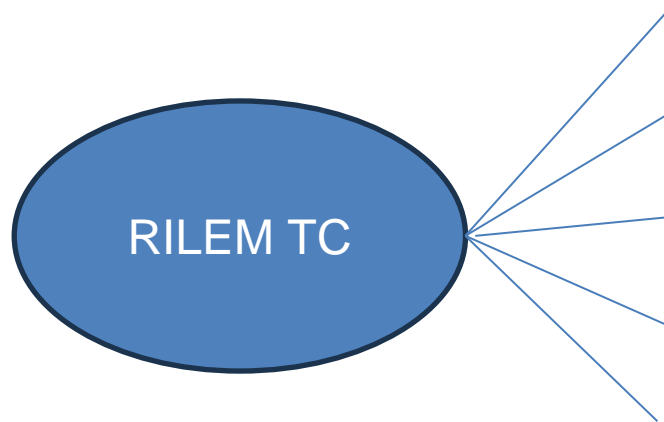
Cluster F: Bituminous Materials and Polymers

- 280-CBE : Multiphase characterisation of cold bitumen emulsion materials
- 295-FBB : Fingerprinting bituminous binders using physico-chemical analysis
- 307-PPB : Physicochemical effects of polymers in bitumen
- 308-PAR : Performance-based Asphalt Recycling
- FEE : Fume Emissions Evaluation for Asphalt Materials
- APD : Alternative Paving Materials - Design and Performance
- APS : Alternative Paving Materials - Sustainability

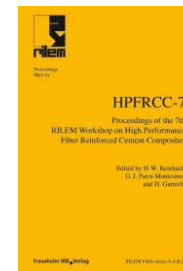


RILEM Publications

Dissemination of information worldwide



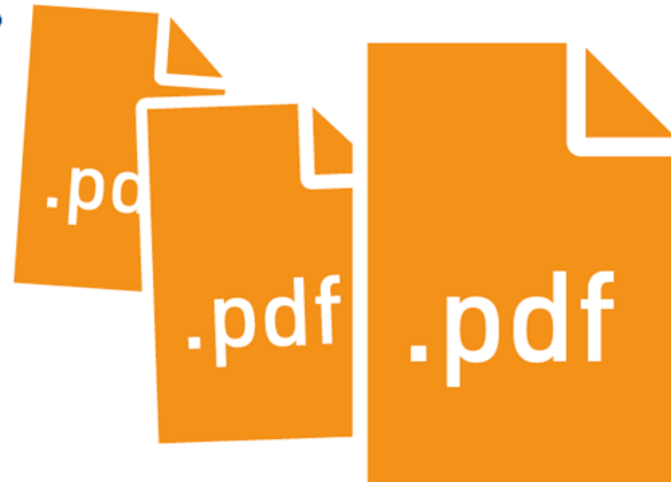
- Recommendation (OA paper in MAAS)
- Proceedings (Springer or RILEM Publications)
- TC report as Paper in Topical Collection of MAAS
- TC opening or finalising activities paper in RTL
- STAR state-of-the-art report, book published by Springer



RILEM Publications



You can download
all our publications **for free**
on the **RILEM** website



RILEM Publications

Materials & Structures (M&S)

50th Anniversary Issue in Open Access

Materials and Structures, **the flagship publication** of the International Union of Laboratories and Experts in Construction Materials, Systems and Structures (RILEM), **provides a unique international and interdisciplinary forum for new research findings on the performance of construction materials.** A leader in cutting-edge research, the journal is dedicated to the publication of **high-quality papers examining the fundamental properties of building materials, their characterization and processing techniques, modelling, standardization of test methods, and the application of research results in building and civil engineering.** Materials and Structures also publishes comprehensive reports prepared by RILEM's technical committees.

RILEM Flagship, created in 1968



RILEM Publications

RILEM Technical Letters (RTL)

RILEM Technical Letters journal was launched in March 2016. With the new scientific peer review journal, RILEM Technical Letters, RILEM seeks to venture into the new era of open access publishing by disseminating contributions breaking new ground in the field of construction materials science.

Scope of the journal and profile of the publications
RILEM Technical Letters publishes reports of major innovative research or strategic research needs in the field of construction and building materials science in the form of short letters available online. The letters are submitted on invitation by the Editorial Board.

RILEM OPEN ACCESS JOURNAL

The logo for RILEM technical letters, featuring the word "RILEM" in a large, white, sans-serif font above the words "technical letters" in a smaller, white, sans-serif font, all set against a dark blue rectangular background.

The journal became indexed in the Directory of Open Access Journals (DOAJ) in September 2018.

In August 2020, RILEM Technical Letters was included in Scopus database.

RILEM Annual and Technical reports



RILEM YouTube channel

www.youtube.com/user/RILEMChannel

YouTube IT

Home

Explore

Shorts

Subscriptions

Library

History

Sign in to like videos, comment, and subscribe.

SIGN IN

BEST OF YOUTUBE

Music

Sports

Gaming

Movies

News

Live

Search

Website

RILEM Association
2.51K subscribers

SUBSCRIBE

HOME VIDEOS PLAYLISTS COMMUNITY CHANNELS ABOUT

Uploads SORT BY

Video Title	Duration	Views	Time Ago
Tension between scientific rigor and policy requiremen...	16:33	80 views	11 days ago
Concrete and Cement Industrial Innovations by Mr...	15:09	105 views	11 days ago
Implementing sustainable construction and how GLOB...	14:59	72 views	11 days ago
Cements containing calcined clay and limestone by Prof...	17:21	152 views	11 days ago
Concrete durability, ionic transport, electromechanic...	30:07	114 views	11 days ago
Cement and clay chemistry for the development of low...	23:51	87 views	11 days ago

Paris Spring Convention 2022 and celebration of 75th anniversary Thursday March 17th, 2022 Webinar event program



RILEM Awards for YOUNG members

RILEM awards the following recognised distinctions annually

✓ **Robert L'Hermite Medalist**

In 1967 when RILEM celebrated its 20th anniversary, it was decided to create a RILEM Medal which would be granted each year to a research scientist. In 1981, the Medal was renamed the Robert L'Hermite Medal, in honour of the President-Founder of RILEM. Since then, each year, the Robert L'Hermite Medal is awarded to a **researcher of less than 40 years**, who has made an exceptional scientific contribution to the field of construction materials and structures.

✓ **Gustavo Colonnetti Medalist**

Starting in 2016, each year, up to **two Gustavo Colonnetti Medals** are awarded to **researchers of less than 35 years**, who have made an outstanding scientific contribution to the field of construction materials and structures

✓ **RILEM Best Student Poster Award**

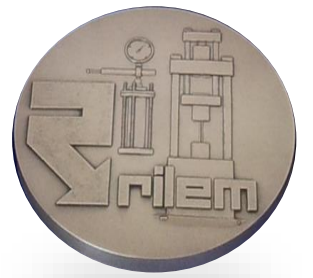
Implemented in 2017, the RILEM Best Student Poster Award is to be given at every RILEM Annual Week conference. The award is given at the conference to a student who has a poster and is at the conference to present/explain the work. The selection is made by a jury chosen by the RILEM Honorary President. The awardee receives a diploma/certificate from the TAC Chair at the conference.

✓ **RILEM PhD Grant**

Implemented in 2018 for the first time, this award is given every year at the RILEM Annual Week to PhD students under the age of 35 and residing in any of the countries where a special discount RILEM membership fee is applicable.

Dr Jose Norambuena-Contreras

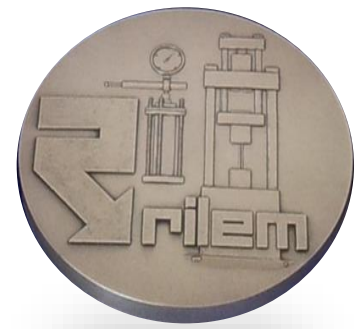
2024 Robert L'Hermite Medallist



Dr Norambuena-Contreras is Associate Professor in Civil Engineering at the University of Bio-Bio (UBB) in Chile, where he leads a multidisciplinary Research Group focused on Advanced Bituminous Materials. Previously, he has held Scientific Positions at several prestigious Universities and Research Centres in Spain, Switzerland, and UK. The Robert L'Hermite medal was awarded to Dr Norambuena-Contreras in recognition of his research activity on self-healing bituminous materials for more sustainable and resilient pavement infrastructure. His internationally recognized expertise and leadership are testified by a very strong publication record, his role as Principal Investigator in several publicly and privately funded research projects and his involvement in scientific committees and evaluation panels at the national and international levels. He has also been very active within RILEM by being a member of several technical committees and part of the Latin America Group "Lat-RILEM". Considering his strong involvement in RILEM and his service to the scientific community, he has also been recently appointed as the new Regional Convener of RILEM for Latin America. Dr Norambuena-Contreras is nowadays in the process of relocating from UBB-Chile, where he worked over the last 9 years, to the United Kingdom, where he will be appointed next June as Senior Lecturer in Civil Engineering at the Faculty of Science and Engineering of Swansea University, with affiliation to the Materials & Manufacturing Research Institute.

Dr Rob Wolfs

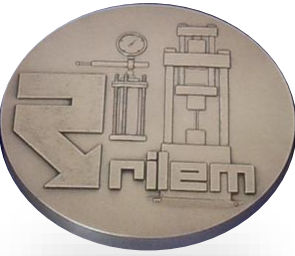
2024 Gustavo Colonnetti Medallist



Dr Rob Wolfs is currently an Assistant Professor in the Built Environment department of the Eindhoven University of Technology (TU/e), Netherlands. His research mainly aims to develop novel digital technologies to design structures with higher efficiency and lower environmental impact. After obtaining his PhD at TU/e, he spent visiting periods in France and Denmark, which helped him develop a strong international network of collaborations, which include research groups and industrial stakeholders. In light of his expertise in robotics for construction and large-scale 3D printing, documented by several highly cited publications, he has been invited to join the scientific committee of international conferences and to give numerous invited talks and keynote talks in Europe, Asia, Africa, and the USA. Dr. Wolfs also has a strong record of supervision and mentoring of undergraduate and graduate students and has been invited to communicate his research to the general public through news articles, TV, and radio programs. Dr. Wolfs has also been very active in RILEM by taking part in several technical committees and contributing to state-of-the-art reports and review papers on concrete 3D printing and related digital fabrication technologies.

Dr Zhenming Li

2024 Gustavo Colonnetti Medallist



Dr Zhenming Li has been a Marie Skłodowska-Curie Postdoctoral Fellow at the University of Sheffield, UK, after receiving his PhD and working for years as a postdoc in Delft University of Technology, the Netherlands. He will be working in Harbin Institute of Technology (Shenzhen) as Professor from 2024. His research activity mainly focuses on understanding, predicting and mitigating the autogenous shrinkage of alkali-activated materials by combining sophisticated experiments and numerical modeling. The impact of his research is documented by the high number of citations received by his numerous high-quality publications, as well as by the fact that he has been invited to give lectures at several international events. His involvement in RILEM includes his participation in several technical committees, for one of which he also serves as executive secretary, and his activity as a lecturer within a doctoral course organized during an annual RILEM week.

RILEM celebrity endorsement



“It is like for a young player to have had the opportunity to play with Pelé, Maradona or nowadays with Messi”

Robert Torrent, Materials Advanced Services Ltd.
2016 RILEM Honorary Member

RILEM industry endorsement

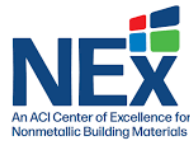


Dr. Fragkoulis Kanavaris, ARUP
London, UK

**Deputy Chair of RILEM TC 287-CCS:
Early age and long-term crack width
analysis in RC Structures**

“... industry companies and firms are very much project and income driven. RILEM is based on voluntary contributions from self-motivated members. This does not bring any profit to a firm but it does bring prestige, credibility and knowledge. Now... there are firms that appreciate that and there are firms that do not”

RILEM Partnerships



European Concrete Societies Network



JCSS



RILEM Corporate Members



सी. एस. आई. आर. - केन्द्रीय भवन अनुसंधान संस्थान, रुड़की - भारत
CSIR - Central Building Research Institute, Roorkee - INDIA



中交四航工程研究院有限公司
CCCC Fourth Harbor Engineering Institute Co., Ltd.



CUNIVERSITÀ
CUSANO



CUGLA
Concrete Solutions



Cracow University
of Technology



ARUP



BETOLAR



CIRCe



RILEM Corporate Members



U.S. Department of Transportation

Federal Highway Administration



The Getty Conservation Institute



LE GOUVERNEMENT
DU GRAND-DUCHÉ DE LUXEMBOURG



RILEM Corporate Members

LEMEJ Laboratorio de Ensayos de Materiales y Estructuras

UNNOBA
Universidad Nacional del Noroeste de la Provincia de Buenos Aires



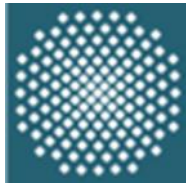
University of Nottingham
Nottingham Transportation Engineering Centre



RISE



SAINTGITS
LEARN.GROW.EXCEL



NLST



UNIVERSITÀ CUSANO



SRIPATH
TECHNOLOGIES, LLC
Make Asphalt Better.



Politechnika Śląska



POLITECNICO MILANO 1863



RILEM Corporate Members



University of Ljubljana



UNIVERSITY OF TRENTO



University of Hertfordshire **UH**



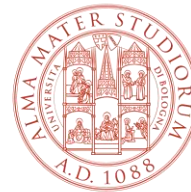
UNIVERSITÉ DE RENNES



TECHNISCHE UNIVERSITÄT DARMSTADT



Universidade do Minho



ALMA MATER STUDIORUM UNIVERSITÀ DI BOLOGNA



Laboratorio di Strade Luigi Tocchetti



RILEM Supports Globe !

The objective of the **Global Consensus on Sustainability in the Built Environment – GLOBE** - is to direct the attention of the global community, politicians, industry leaders, and societal decision-makers to the critical importance of the built environment for sustainable development at global and local scales. To learn more about the consensus, please visit [Globe page](#) or the [Dec 2021 press release](#).



SUPPORT: <http://globe-consensus.com/>

Contact us

Secretariat General

RILEM

14-20 Boulevard Newton Bâtiment
Bienvenue Cité Descartes, Champs
sur Marne
77447 Marne la Vallée Cedex 2 –
France

Telephone: + 33 1 60 05 14 04

Email: sg@rilem.org

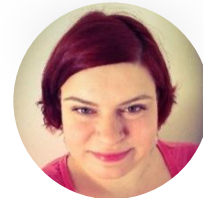
Subscribe to RILEM's social media channels
on LinkedIn, Facebook, Twitter and YouTube
to stay abreast on what's happening at RILEM!



General Secretary
Mrs. Judith HARDY



Management Assistant
Ms. Aurelie MARTINGALE



**Head of Publications
and Communication**
Ms. Anne GRIFFOIN



**RILEM Implementation Manager
(External consultant not at Secretariat
General)**
Dr. Daniela Ciano
rim@ext.rilem.org